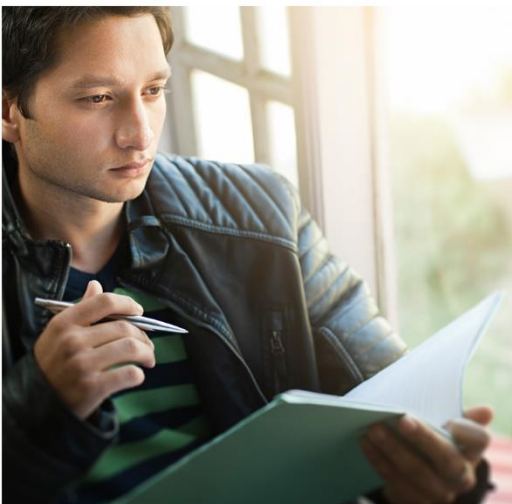
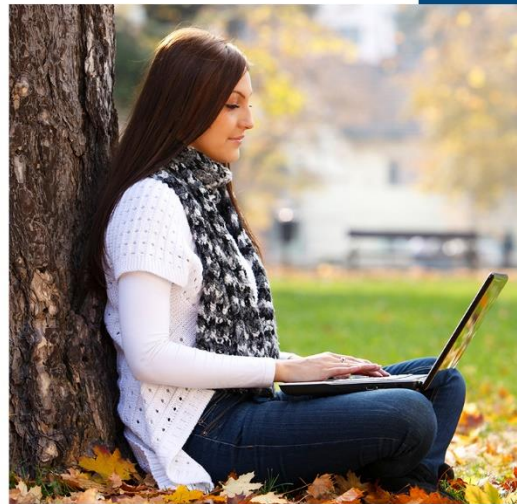




School of
Distance Education
Andrews University

SYLLABUS



**ARTH 220 Language of Art
Summer 2023**

ARTH 220 Language of Art

School of Distance Education

Interactive Online Format

This course follows an interactive online format and has Wednesday and Thursday deadlines. You are expected to login regularly (several times a week) during the course to participate in the online discussions and to complete assignments. Please plan accordingly. **Please review the Dates & Deadlines widget on the right side of your course in LearningHub for the last day to withdraw for a full refund.**

Instructor Contact

Please refer to course in LearningHub for the teacher contact information.

Other Assistance

Username and password assistance	helpdesk@andrews.edu	(269) 471-6016
Technical assistance with online courses	dlit@andrews.edu	(269) 471-3960
Exam requests and online proctoring	sdeexams@andrews.edu	(269) 471-6566
Distance Student Services - any other questions	sdestudents@andrews.edu	Text: (269) 397-4477

Part 1: Course Information

Course Description

This introductory course examines the many definitions of art throughout the ages including cultural value and how it is expressed visually. The elements of art as a visual language will be assessed through the viewing of artworks of all media from prehistory up to contemporary advertising. Emphasis will be placed on critical thinking and evaluation of the purpose of art from functional object, religious symbol, propaganda tool, and platform for societal issues, to a medium for individual expression.

Required Text/Material

Note to Berrien Springs campus students: This course is part of the campus' course material delivery program, [First Day Complete](#), already paid for in your bill unless you opted out. The bookstore will provide each student with a convenient package for physical books and any digital materials for this course that have been integrated into LearningHub.

Note to online and guest students: Textbooks for online courses may be purchased from any supplier. For financial aid in payment, contact your financial advisor at the university where you are completing your degree. Andrews University degree students who have confirmed that funds are available will then purchase the books themselves and send receipts to their financial advisor for reimbursement.

Sayre, H. M. (2016). *A World of Art*. Pearson.

Print ISBN: 9780134081809

eText ISBN: 9780134082271

Credit Hour and Commitment

This course is offered for 3 semester credits; therefore it is expected that you will spend 135 total hours on this course. This translates to a steady 9 hours each week. You'll spend your time reading, accessing and watching instructional materials, interacting with your instructor and classmates, and completing homework.

A recommended weekly schedule to divide your time is provided:

- Readings: 2 hours
- Power Point and Video viewing: 2 hours
- Art Theme of the Week Presentation Assignments: 2 hours
- Art Theme of the Week Image Analysis: 2 hours
- Quizzes: 30 minutes
- Summary Assignments: 30 minutes per week

Institutional Outcomes

1. *Pursue enduring questions through study in core fields* and explore the connections between those fields. (emphasis supplied)
 - Assessment: Student will create a summative art project assignment that incorporates the elements and principles of design and selected artworks from our themes of the week which will include a more detailed analysis of a selection of those artworks, along with a summary statement of their reactions to guest lectures and experiences in researching art, discussing art and presenting their thoughts through forums.

Student Learning Outcomes

1. Identify the Elements and Principles of Design and apply it to various artistic styles, mediums, and timeframes.
 - Assessment: Quizzes, Discussion, PowerPoint presentations, guest lectures, weekly presentations – items that evidence student's knowledge of artistic mediums, styles, and the elements and principles that make good art.
2. Identify the interaction between their world, and the world of art through the exploration of themes.
 - Assessment: Discussion questions, group activities through forums, individual presentations - items that encourage students to retell and/or explain their daily story in terms of the art they encounter, consume, and create and to draw connections between their experiences and those of artists.
3. Discuss with clarity, other cultures and timeframes in terms of its art.
 - Assessment: Class discussions through forums (see Assessment Descriptions below for details), PowerPoint presentations - items in which students summarize, compare and/or associate art/artifacts of culture with stories, narratives or other unique characteristics of the culture and commonalities across cultures

Part 2: Course Methods and Delivery

Methods of Instruction

Methods of instruction include assigned readings from the textbook, the viewing and reading of visual presentations (Power Point and posted video), weekly quizzes, online forum presentations, individually created video reactions to art themes, and a final summative art project assignment. Regular participation in the course is essential to good performance.

Technical Requirements

- Computer: PC (Win 7 or newer) or MAC (10.6 or better)
- A webcam with microphone, and speakers (or plug in headset)
- Internet: 2.4 Mbps or faster DSL, cable or Wi-Fi connection
- Browser: Current version of Chrome or Firefox
- Software: MS Office 2013 or newer ([student copy here](#))

LearningHub Access

This course is delivered online through LearningHub at <http://learninghub.andrews.edu>

Your username and password are your Andrews username and password. You need to activate your username and password to access LearningHub.

Please do this online here: <https://vault.andrews.edu/vault/pages/activation/information.jsp> if you haven't already. If you need assistance, call or email us: (296) 471-6016 or <mailto:helpdesk@andrews.edu>.

If you need technical assistance at any time during the course, or to report a problem with LearningHub, please email dlit@andrews.edu or call (269) 471-3960. Do NOT contact the teacher for technical issues with Learning Hub.

Part 3: Course Requirements

Important Note: This online class is **not** self-paced. You can arrange your schedule flexibly during each week, but you **MUST** participate each week. You are expected to “show up” to class by interacting in the discussion forums a minimum of two times per week. In addition, assignments are due regularly each week. Adequate Internet access during the duration of the course is critical for your participation. To be successful, plan to spend time daily on the course.

Course weeks [after the first week] begin on Friday and end on Thursday.

Assessment Descriptions

Quizzes

Chapter quizzes are given weekly. Quizzes are strictly over textbook readings and usually consist of 10-15 multiple choice questions. Quizzes are to be taken in Learning Hub by Thursday at 11:55pm and are open book. Quizzes are timed.

Art Theme of the Week (ATW) Presentations

There are 10 ATW Presentations assignments due throughout the semester; roughly one per week beginning the third week of class. All follow the same format but with a different theme. These assignments involve an assignment post and responses to at least TWO of your classmates posts in a discussion forum.

- **Discussion Forums**

- Discussion forums are opportunities for students to engage with each other in online feedback. The forums in this course have discussions which are informal and based on the student's thoughts. Such discussions may include personal introductions and opportunities to know more about other participants in the course as well as academic topics. Informal forums are great for sharing interests, observations and encouragements with classmates.
- For each forum in this course you will be required to create an initial post and, at least, TWO replies to classmates. The initial post (ATW Presentations) is due by 11:55 pm on the WEDNESDAY of the week the discussion is assigned. Replies to classmates are due by 11:55 pm on THURSDAY of the week the discussion is assigned.

Art Theme of the Week Image Analysis

There are 10 ATW Image Analysis assignments – each one corresponds to our 10 Theme of the Week Images. For each of the 10 themes, you will create a 2-3 minute video responding to one of the six artworks that are discussed through PP and posted to Panopto.

Guest Lecture Presentation Summaries

There are four guest lecture/presentations given in Weeks 10, 12, 13, and 14. Each video lecture covers one of the main areas of art taught at Andrews University; Photography/Video, Architecture, Graphic Design, and Fine Art. This one assignment will require you to watch the video presentations of the guest lectures and respond to each in a paragraph summary. This assignment falls into the category of Summary Assignments which counts as 20% of your overall grade.

Summative Art Project

At the end of the semester you will have a final assignment that will demonstrate your understanding of the Themes of Art, and Elements and Principles of Design, as well as your ability to share your thoughts. This assignment falls into the category of Summary Assignments which counts as 20% of your overall grade.

Rubrics

The following is a guide on how all assignments will be assessed.

A submission: This submission does not just fulfill the assignment, it also has something original and important to say and the points it makes are supported well and show creativity where appropriate (ATW Image Analysis). It is organized effectively, develops smoothly, and it is written or presented clearly and correctly. It is based on course presentations, videos, and readings (including any additional research if appropriate), and is clearly related to the points it has to make. Conclusions suggests that the writer/creator has synthesized the available materials (textbook readings, posted videos, PPs, guest lectures, etc.), reflected on it and arrived at a position or perspective on the topic while demonstrating an excellent understanding of the Elements and Principles of Design. It is correct in mechanics and APA 7th ed. citation style.

B submission: This submission fulfills the assignment well. Its general idea is clear and it is effectively presented. It handles sources well, with no serious errors of fact or interpretation. It reflects on a competent reading of the assigned text, adequate viewing of PPs and posted videos (including guest lectures when applicable), but information is not as authoritative or clear as it should be. Generally, the submission is correct in usage, appropriate in style, and correct in mechanical standards of writing. The Submission reflects a good understanding of the Elements and Principles of Design.

C submission: This submission is adequate to fulfill the assignment, but lacks originality and perspective. Points may be hard to follow and the submission may be poorly organized (No headings or clear relationships to questions asked or instructions given). Sources of information are poorly chosen -- inappropriate types, lacking in authority, no artwork image checking, etc. There may be errors in mechanics of writing and there is evidence of only a slight reference that demonstrates student interaction with reading of the assigned text, adequate viewing of PPs and posted videos (including guest lectures when applicable), and instructions. Submission reflects a basic understanding of the Elements and Principles of Design.

D submission: This submission meets only the minimum requirement of the assignment. The submission may lack adequate focus and instead attempt to answer questions and follow instructions broadly and simplistically. There may be serious error of fact or interpretation. Assignment is incomplete, inaccurate or is formatted incorrectly. Submission shows an overall lack of understanding of the Elements and Principles of Design.

F submission: This submission does not fulfill the assignment. It may omit important material lying within its declared scope or make repeated errors of fact or interpretation. It may be plagiarized.

Adapted from Cornell College Library *Grading Guide* <https://www.cornellcollege.edu/library/faculty/focusing-on-assignments/tools-for-assessment/grading-guide.shtml>

Exams

There are no exams for this course.

Schedule:

All times in the schedule are for the U.S. Eastern Time Zone. All assignments are due Thursdays in the week assigned unless otherwise noted.

Academy students: You MUST submit academic work by the drop/add date of this course to verify your attendance in this course. That deadline is likely earlier than the deadline for the first assignment.

Week	Lessons	Required Resources	Assignments	Outcomes Met
Intro	These items will need to be completed before you will have access to the rest of the course	Orientation Course Overview Introductions Academic Integrity	Student Introductions Academic Integrity Quiz Academic Integrity Statement	
1 May 15 – 18	Lesson 1: Introduction: <ul style="list-style-type: none"> What is art and why is it important? The Elements and Principles of Design The Four Roles of an artist Categories of art and themes of art 	Sayre Ch. 1 – Discovering a World of Art Sayre Ch. 2 – Developing Visual Literacy Video in Lesson 1 PPT “A World of Art and Visual Literacy”	Chapter 1 Quiz Chapter 2 Quiz Due Thurs, May 25, 11:59 pm	SLO 1, 2
2 May 19 – 25	Lesson 2: Line, Shape, and Space	Sayre Ch. 3 – Line Sayre Ch. 4 – Shape & Space Videos in Lesson 2 PPTs “Line” and “Shape & Space”	Chapter 3 Quiz Chapter 4 Quiz	SLO 1
3 May 26 – June 1	Lesson 3: Color and Value (light) Theme of the Week: <i>Spirituality: Art and the Divine</i>	Sayre Ch. 5 – Light & Color Videos in Lesson 3 PPT “The Element of Light and Color” PPT “Art and the Divine”	Art of the Week (ATW) Presentation 1 Art of the Week (ATW) Image Analysis 1 Chapter 5 Quiz	SLO 1, 2, 3
	Lesson 4: Texture, Time, and Motion Theme of the Week: <i>Power: Art and the Depiction of Authority and Strength</i>	Sayre Ch. 6 – Texture, Time, and Motion Videos in Lesson 4 PPT “Texture, Time, and Motion” PPT “Power”	ATW Presentation 2 ATW Image Analysis 2 Chapter 6 Quiz	SLO 1, 2, 3
4 June 2 – 8	Lesson 5: The Principles of Design Theme of the Week: <i>Social Justice and Political Activism: How Art Communicates Change</i>	Sayre Ch. 7 – The Principles of Design Videos in Lesson 5 PPT “The Principles of Design” PPT “Social Justice and Political Activism”	ATW Presentation 3 ATW Image Analysis 3 Chapter 7 Quiz	SLO 1, 2, 3
5 June 9 – 15	Lesson 6: Categories of Art: Drawing Theme of the Week: <i>Art and the Natural World: Human Interactions with Flora and Fauna</i>	Sayre Ch. 8 – Drawing Videos in Lesson 6 PPT “Drawing” PPT “The Natural World – Humans Interacting with Flora and Fauna”	ATW Presentation 4 ATW Image Analysis 4 Chapter 8 Quiz	SLO 1, 2, 3
6 June 16 – 22	Lesson 7: Categories of Art: Painting Theme of the Week: <i>Art and Gender: Male and Female Stereotypes Through the Ages</i>	Sayre Ch. 9 – Painting Videos in Lesson 7 PPT “Painting” PPT “Art and Gender”	ATW Presentation 5 ATW Image Analysis 5 Chapter 9 Quiz	SLO 1, 2, 3

Week	Lessons	Required Resources	Assignments	Outcomes Met
7 June 23 – 29	Lesson 8: Categories of Art: Printmaking Theme of the Week: <i>The Working Class and Everyday Life; Art and Labor</i>	Sayre Ch. 10 – Printmaking Videos in Lesson 8 PPT “Printmaking” PPT “Art and Labor”	ATW Presentation 6 ATW Image Analysis 6 Chapter 10 Quiz	SLO 1, 2, 3
	Lesson 9: Midterm Week: Choice – one of two video assignments	None	Choose One: Midterm Video(s) – Tim’s Vermeer/Art 21	SLO 2
8 June 30 – July 6	Lesson 10: Categories of Art: Photography Theme of the Week: <i>Identity; Art and the Concept of “Who Am I?”</i>	Sayre Ch. 11 – Photography and Time-Based Media Guest Lecture Presentation with Andrews University photography professor, Dave Sherwin Videos in Lesson 9 PPT “Art and Identity”	ATW Presentation 7 ATW Image Analysis 7 Chapter 11 Quiz	SLO 2, 3
9 July 7 – 13	Lesson 11: Categories of Art: Sculpture Theme of the Week: <i>The Mind; Art and Psychology and Surrealism</i>	Sayre Ch. 12 – Sculpture Videos in Lesson 11 PPT “Sculpture” PPT “Art and the Mind”	ATW Presentation 8 ATW Image Analysis 8 Chapter 12 Quiz	SLO 1, 2, 3
	Lesson 12: Categories of Art: Architecture Theme of the Week: <i>Consumption and Pop; Art and Consumer Culture</i>	Sayre Ch. 14 – Architecture Guest Lecture Presentation with Andrews University architecture professor, Andrew von Maur Videos in Lesson 12 PPT “Consumption and Consumerism”	ATW Presentation 9 ATW Image Analysis 9 Chapter 14 Quiz	SLO 2, 3
10 July 14 – 20	Lesson 13: Categories of Art: Graphic Design Theme of the Week: <i>Narrative; How Art Tells Stories</i>	Sayre Ch. 15 – The Design Profession Guest Lecture Presentation by Andrews University Graphic Design professors, Diane Myers and Doug Taylor Videos in Lesson 13 PPT “Art as Storyteller”	ATW Presentation 10 ATW Image Analysis 10 Chapter 15 Quiz	SLO 2, 3
11 July 21 – 27	Lesson 14: Categories of Art: Fine Art 1	Guest Lecture Presentation 1 by Andrews University Fine Art Professor Emeritus Greg Constantine – Part 1		SLO 2, 3
	Lesson 15: Categories of Art: Fine Art 2	Guest Lecture Presentation 2 by Andrews University Fine Art Professor Emeritus Greg Constantine – Part 2	Submit Guest Lecture Presentation Summaries	IO 1 SLO 2, 3
12 July 28 – August 4	Summative Art Project due			IO 1 SLO 1, 2, 3

Completing Assignments

All assignments for this course will be submitted electronically through LearningHub unless otherwise instructed. All assignments, with the exception ATW Presentations, are due on Thursdays at 11:55pm. ATW Presentations assignments have two parts with the initial post being due on Wednesdays by 11:55pm and the responses/comments to classmates due the next day on Thursday by 11:55pm.

Part 4: Grading Policy

Graded Course Activities

Percent %	Description
20	Quizzes
60	Presentations/Analysis
20	Summary Assignments
100	Total Percent Possible

Viewing Grades in Moodle

- Click into the course.
- Click on the **Grades** link in Administration Block to the left of the main course page.

Letter Grade Assignment

Letter Grade	Percentage
A	93-100%
A-	90-92%
B+	88-89%
B	83-87%
B-	80-82%
C+	78-79%
C	73-77%
C-	70-72%
D	60-69%
F	0-59%

Part 5: Course Policies

Withdrawal and Incomplete Policies

The current withdrawal policy can be found online at <https://www.andrews.edu/distance/students/gradplus/withdrawal.html>. The incomplete policy is found online at <http://www.andrews.edu/web/mvc/moodle/public/incompletes.html>.

Late Work

Due dates are listed both in the LearningHub course space and in the syllabus. Late work will have 10% of the earned points deducted.

Maintain Professional Conduct Both in the Classroom and Online

The classroom is a professional environment where academic debate and learning take place. Your instructor will make every effort to make this environment safe for you to share your opinions, ideas, and beliefs. In return, you are expected to respect the opinions, ideas, and beliefs of other students—both in the face-to-face classroom and online communication. Students have the right and privilege to learn in the class, free from harassment and disruption.

Netiquette

In this course you will communicate with your classmates and instructor primarily in writing through the discussion forum and e-mail.

"Online manners" are generally known as "netiquette." As a general rule, you should adhere to the same classroom conduct that you would "off-line" in a face-to-face course. Some examples of proper netiquette are:

1. Avoid writing messages in all capital letters. THIS IS GENERALLY UNDERSTOOD AS SHOUTING.
2. Be careful what you put in writing. Even if you are writing an e-mail message to one person, assume that anyone could read it. Though you may send an e-mail to a single person, it is very easy to forward your message to hundreds or thousands of people.
3. Grammar and spelling matter. Online courses demand the same standard of academic communication and use of grammar as face-to-face courses.
4. Never use profanity in any area of an online course. The transcripts of online course discussion forums, e-mail, and chat sessions are savable.
5. When responding to messages, only use "Reply to All" when you really intend to reply to all.
6. Avoid unkindly public criticism of others. Publicly criticizing others in an inappropriate way is known as "flaming." Consider this course a practice forum for selecting your verbiage thoughtfully and professionally.
7. Use sarcasm cautiously. In the absence of nonverbal cues such as facial expressions and voice inflections, the context for your sarcasm may be lost, and your message may thus be misinterpreted.
8. In a face-to-face setting, our tone of voice and facial expressions may convey as much of our meaning as the words we use. In a written message, the subtext of your meaning may be confused or misinterpreted. Write clearly. Use active verbs.

[Source: University of Maryland, Communications Department]

Academic Accommodations

Students who require accommodations may request an academic adjustment as follows:

1. Read the Andrews University Disability Accommodation information at <https://www.andrews.edu/services/sscenter/disability/>
2. Download and fill in the disability form at <http://www.andrews.edu/services/sscenter/disability/accommodationsreqform.pdf>. Preferably type answers. To save a digital copy, 1) print to file and save or 2) print and scan. Email the completed form and disability documentation (if any) to success@andrews.edu or fax it to (269) 471-8407.
3. Email sdestudents@andrews.edu to inform the School of Distance Education that a disability has been reported to Student Success.

Commitment to Integrity

As a student in this course, and at the university, you are expected to maintain high degrees of professionalism, commitment to active learning, participation in this course, and integrity in your behavior in and out of this online classroom.

Commitment to Excellence

You deserve a standing ovation based on your decision to enroll in, and effectively complete this course. Along with your pledge of "commitment to Integrity" you are expected to adhere to a "commitment to excellence." Andrews University has established high academic standards that

will truly enhance your writing and communication skills across the disciplines and in diverse milieu with many discourse communities in the workplace.

Honesty

Using the work of another student or allowing work to be used by another student jeopardizes not only the teacher-student relationship but also the student's academic standing. Lessons may be discussed with other students, tutors may help to guide a student's work, and textbooks, encyclopedias and other resource materials may be used for additional assistance, but the actual response must be the student's own work. A student who gives information to another student to be used in a dishonest way is equally guilty of dishonesty.

Any violation of this policy will be taken before the Higher Education Academic and Curriculum Committee for appropriate punitive action.